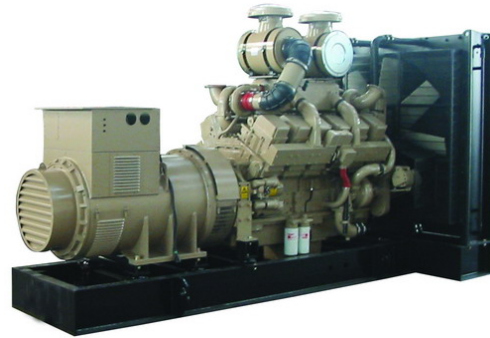




Frequency : 50Hz  
 Fuel Type : Diesel

## COOL POWER GENSET TECHNICAL DATA



**Model**                    **CPC955E**  
 Standby power        764 kW / 955 kVA  
 Prime power            720 kW / 900 kVA

Fuel consumption	Standby				Prime			
	kW (kVA)				kW (kVA)			
Ratings	764 (955)				720 (900)			
Load	1/4	1/2	3/4	Full	1/4	1/2	3/4	Full
US gph	N.A	N.A	N.A	N.A	N.A	N.A	N.A	N.A
L/hr	49	98	147	215	45	89	132	191

### Engine

Engine manufacturer	Cummins
Engine model	KTA38-G2A
Configuration	4-Cycle; 60° Vee; 12-Cylinder Diesel
Aspiration	Turbocharged & Aftercooled
Gross engine power output -- kWm	895
BMEP at set rated load -- kPa	5114
Bore -- mm	159
Stroke -- mm	159
Rated speed -- rpm	1500
Piston speed -- m/s	7.9
Compression ratio	14.5:1
Lube oil capacity -- L	114
Overspeed limit -- rpm	1800 ±50
Regenerative power -- kWm	82
Governor type	Electronic
Starting voltage	24 Volts DC

### Fuel flow

Recommended fuel	ASTM NO.2-D
Governor Type	Mechanical
Max fuel transfer pump suction--(m)	0.9

### Oil system

Oil system capacity--(L)	114
Recommended oil	API-CD OR BETTER
Oil normal temperature--(°C)	121
Oil consumption at 100%	1.07

### Air

Combustion air -- m <sup>3</sup> /min	67.56
---------------------------------------	-------

### Exhaust

Exhaust flow--(m <sup>3</sup> /min)	193.5
Exhaust temperature--(°C)	≤536
Allowable restriction--(kPa)	10

Exhaust pipe diameter--(mm)	152
-----------------------------	-----

### Standard set-mounted radiator cooling

Radiator and engine capacity--(L)	239
Fan power--(kW)	19
Fan Air flow--(m <sup>3</sup> /min)	1400
Coolant normal temperature--(°C)	82-93
Max water temperature--(°C)	104
Type of coolant	Glycol

### Alternator

Alternator manufacturer	Stamford
Alternator model	HCI 634H
Control System	PMG and Brushless
Insulation class	H
Temperature Rise	H
Rated Power Factor	0.8
Winding Pitch	Two Thirds
Voltage adjust scope	≥ ±5%
Weight--(kg)	2117
A.V.R.	MX321
Protection	IP 23
Stator Winding	Double layer Concentric
Winding Leads	12
Voltage regulation	≤ ±10%
Bearing number	1
Cooling Air--(m <sup>3</sup> /sec)	1.614

### Weights\*

	Open	Enclosed
Unit wet weight kgs	7100	N.A.

\* Weights represent a set with standard features. See outline drawing for weights of other configurations

### Dimensions

	Length "A"	Width "B"	Height "C"
Standard open set dimensions, mm	4350	2010	2504

### Control Panel

Manual Control Panel:	Auto Control Panel:	Remote control Panel:
Manual start	Manual and auto start	All the parameter can display on LCD screen
Voltage, Current, Frequency, Battery voltage, Hour meter, Charger Alternator Voltage and Speed(R.P.M) can be displayed by means of LCD	The parameter of Voltage, Current, Frequency, Battery voltage, Hour meter, Charger Alternator Voltage and Speed(R.P.M) can be displayed on LCD screen	It includes all the function of manual and auto control panel.
Emergency stop pushbutton	Emergency stop push button	Detect RPM of the gen-set, active power, power factor and so on. It also can detect main parameter, include main voltage, main frequency. Event and performance log

See your distributor for more information.

COOLTECH POWER INTERNATIONAL PTE. LTD.  
 Add: 22 Boon Lay Way, #01-64 Tradehub 21, Singapore 609968  
 Tel: +65-67957003 Fax: +65-67957013  
 Website: [www.generators.com.sg](http://www.generators.com.sg)