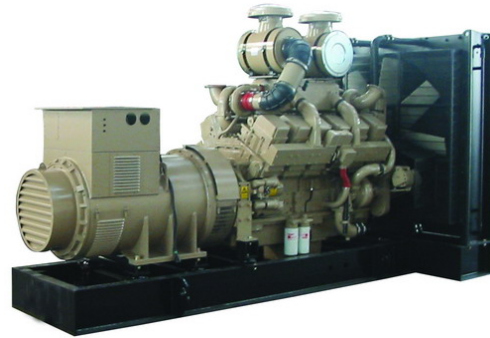




Frequency : 50Hz
 Fuel Type : Diesel

COOL POWER GENSET

TECHNICAL DATA



Model **CPC1100E**
 Standby power 880 kW / 1100 kVA
 Prime power 800 kW / 1000 kVA

Fuel consumption	Standby				Prime			
	kW (kVA)				kW (kVA)			
Ratings	880 (1100)				800 (1000)			
Load	1/4	1/2	3/4	Full	1/4	1/2	3/4	Full
US gph	N.A	N.A	N.A	N.A	N.A	N.A	N.A	N.A
L/hr	N.A	N.A	N.A	228	65	113	161	209

Engine

Engine manufacturer	Cummins (CCEC)
Engine model	KTA38-G5
Configuration	4-Cycle; 60° Vee; 12-Cylinder Diesel
Aspiration	Turbocharged & Aftercooled
Gross engine power output -- kWm	970
BMEP at set rated load -- kPa	2055
Bore -- mm	159
Stroke -- mm	159
Rated speed -- rpm	1500
Piston speed -- m/s	7.9
Compression ratio	13.9:1
Lube oil capacity -- L	135
Overspeed limit -- rpm	1800 ±50
Regenerative power -- kWm	137
Governor type	Electronic
Starting voltage	24 Volts DC

Fuel flow

Recommended fuel	ASTM NO.2-D
Governor Type	Electronic
Max fuel transfer pump suction--(m)	0.9

Oil system

Oil system capacity--(L)	135
Recommended oil	API-CD OR BETTER
Oil normal temperature--(°C)	121
Oil consumption at 100%	1.14

Air

Combustion air -- m ³ /min	72.78
---------------------------------------	-------

Exhaust

Exhaust flow--(m ³ /min)	198.36
Exhaust temperature--(°C)	≤513
Allowable restriction--(kPa)	10

Exhaust pipe diameter--(mm)	159
-----------------------------	-----

Standard set-mounted radiator cooling

Radiator and engine capacity--(L)	245
Fan power--(kW)	22
Fan Air flow--(m ³ /min)	1400
Coolant normal temperature--(°C)	82-93
Max water temperature--(°C)	104
Type of coolant	Glycol

Alternator

Alternator manufacturer	Stamford
Alternator model	HCI 634J
Control System	PMG and Brushless
Insulation class	H
Temperature Rise	H
Rated Power Factor	0.8
Winding Pitch	Two Thirds
Voltage adjust scope	≥ ±5%
Weight--(kg)	2279
A.V.R.	MX321
Protection	IP 23
Stator Winding	Double layer Concentric
Winding Leads	12
Voltage regulation	≤ ±10%
Bearing number	1
Cooling Air--(m ³ /sec)	1.614

Weights*

	Open	Enclosed
Unit wet weight kgs	7210	N.A.

* Weights represent a set with standard features. See outline drawing for weights of other configurations

Dimensions

	Length "A"	Width "B"	Height "C"
Standard open set dimensions, mm	4385	2010	2320

Control Panel

Manual Control Panel:	Auto Control Panel:	Remote control Panel:
Manual start	Manual and auto start	All the parameter can display on LCD screen
Voltage, Current, Frequency, Battery voltage, Hour meter, Charger Alternator Voltage and Speed(R.P.M) can be displayed by means of LCD	The parameter of Voltage, Current, Frequency, Battery voltage, Hour meter, Charger Alternator Voltage and Speed(R.P.M) can be displayed on LCD screen	It includes all the function of manual and auto control panel.
Emergency stop pushbutton	Emergency stop push button	Detect RPM of the gen-set, active power, power factor and so on. It also can detect main parameter, include main voltage, main frequency. Event and performance log

See your distributor for more information.

COOLTECH POWER INTERNATIONAL PTE. LTD.
 Add: 22, Boon Lay Way, #01-64 Tradehub 21, Singapore 609968
 Tel: +65-67957003 Fax: +65-67957013
 Website: www.generators.com.sg

The above information is only for reference purpose and shall constitute no restraint to us. No further notice shall be given upon any change of the information, We reserve the authority for final revision.